



# POWER EGG2.0 Ver.2.11c

## Initial Manual (English version)



---

## Introduction



This document explains about the browser setup and login that are used in POWER EGG for POWER EGG users.

In addition, this document is the only one manual in English.

### About Notation

Notation	Description
*	Indicates as a required field.
 <b>MEMO</b>	Refers to the reference information.
	Refers to the supplement of the field.

# Index

- 1.Client Initial Setup .....1
  -  Internet Explorer Setup..... 1
  
- 2.Login .....5
  - Important Notices Related to the Use of POWER EGG..... 5
  - 2.1 POWER EGG Startup..... 7
    -  Log in to POWER EGG ..... 7

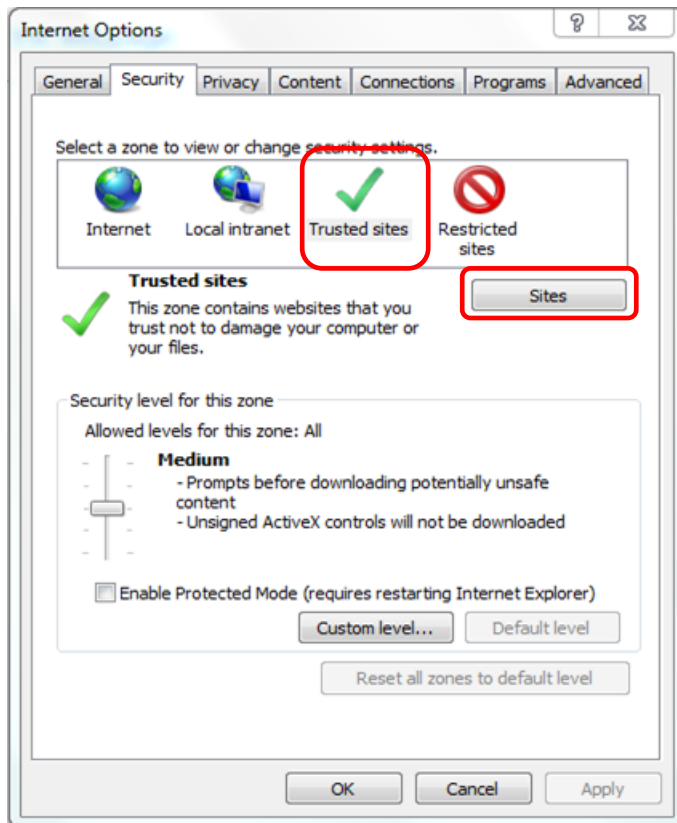
# 1. Client Initial Setup

When using POWER EGG by Internet Explorer, you need to set up the Web browser. However, in the case of Firefox, Google Chrome and Safari, the browser setup is not necessary.

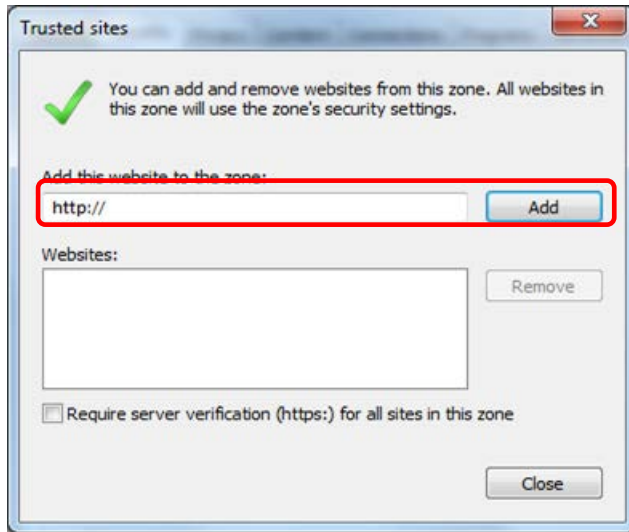
<b>MEMO</b>	About the correspondence browser, in the case of Windows OS: you need to install Internet Explorer 11, the latest stable version of Firefox, or the latest stable version of Google Chrome, and in the case of Mac OS: only the latest stable version of Safari is necessary. Besides, when you use Internet Explorer, only 32-bit version is supported. In addition, the correspondence OSs are Windows 7, 8, 8.1,10 Mac OS X (10.4 or higher).
-------------	--

## Internet Explorer Setup

- Step.1: Start Internet Explorer.
- Step.2: On the **Tools** menu, click **Internet Options**.
- Step.3: On the **Internet Options**, click **Security**.
- Step.4: Choose the **Trusted sites** then click **Sites** button.



- Step.5: In the **Trusted sites** dialog box, enter the URL to access to POWER EGG, and then click **Add** button.

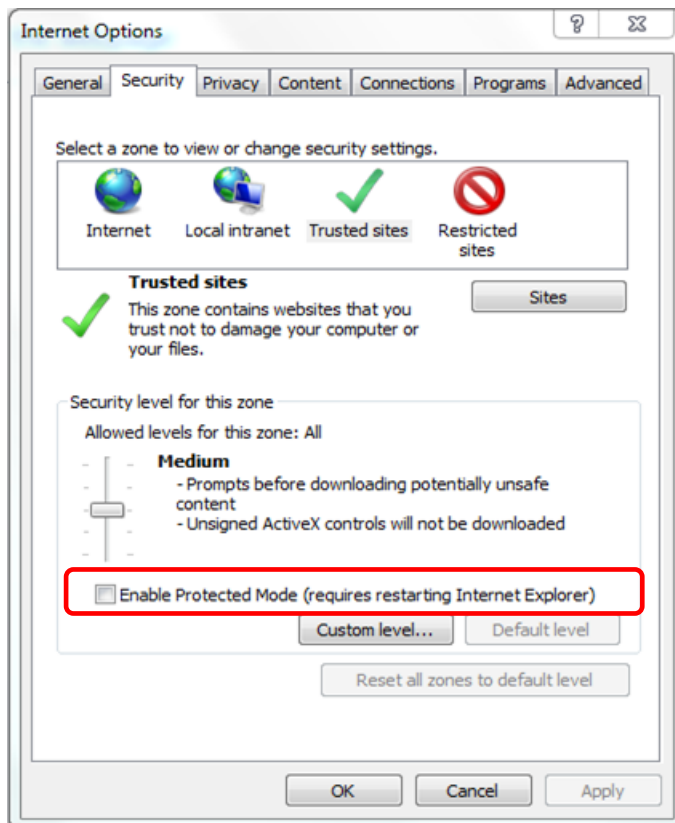


**MEMO**

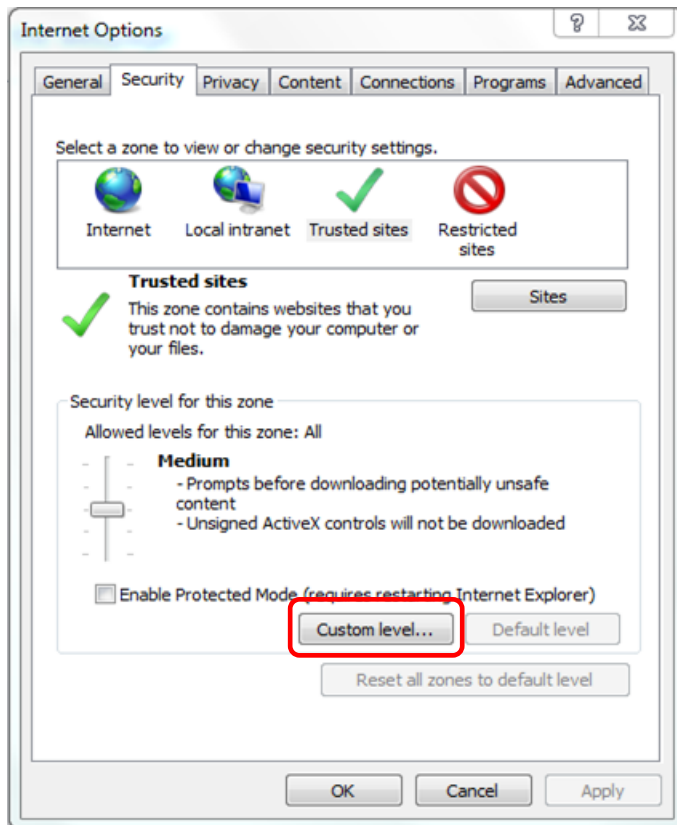
About the URL setting and “Require server verification (https:) for all sites in this zone” checkbox checking, confirm with the system administrator.  
 In addition, in the URL field, enter a server name or an IP address. If the port number is assigned, then also enter the port number.  
 For example, if the login URL of POWER EGG is “http://pesvr:7777/pe4j/index.jsp”, then enter “http://pesvr:7777”. (“pesvr” is the server name, “7777” is the port number.)

Step.6: Click **Close** button in the **Trusted sites** dialog box.

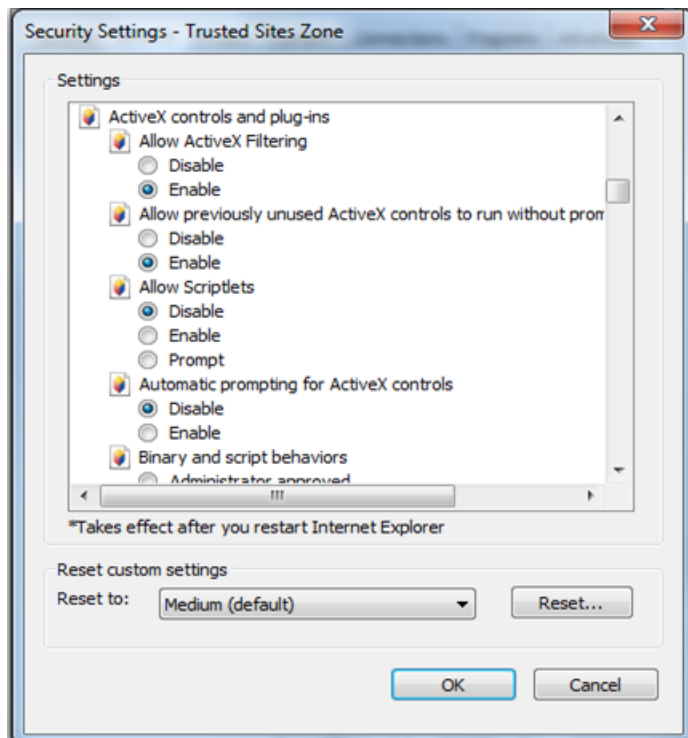
Step.7: Confirm whether the “Enable Protected Mode (requires restarting Internet Explorer)” is OFF (unchecked) or not. In case of ON (checked), remove the check.



Step.8: Click **Custom level...** button in the **Internet Options** dialog box.



Step.9: Perform the following settings in the **Security Settings – Trusted Sites Zone** dialog box, and then click **OK** button.



Setup field	Setup value
ActiveX controls and plug-ins	“Enable”

Setup field	Setup value
Automatic prompting for ActiveX controls	“Disable”
Initialize and script ActiveX controls not marked as safe for scripting	“Enable”
Script ActiveX controls marked safe for scripting	“Enable”
Download signed ActiveX controls	“Prompt” or “Enable”
Download unsigned ActiveX controls	“Prompt” or “Enable”
Allow websites to open windows without address or status bar	“Enable” (recommend)
Allow script-initiated windows without size or position constrains	“Enable” ( recommend)
Allow Programmatic clipboard access	“Enable”
Use Pop-up Blocker	“Disable”

\* Use the browser default value for the remaining fields.

Step.10: In the **Internet Options**, click **OK** button to complete the setup.

<b>MEMO</b>	<p>In addition to the settings above, in the case of using a proxy server, perform the exception setup for not to use POWER EGG site as a proxy server.</p> <p>About the necessity of the exception setup of the proxy server, ask the system administrator.</p>
-------------	--

## 2. Login

This chapter explains about the login method.

### Important Notices Related to the Use of POWER EGG

1. Do not log in by the same user at the same time.  
POWER EGG is based on “one employee - one user ID” design. If logging in and operating by the same user at the same time, the data may be collapsed.
2. Do not perform the screen transition by using buttons other than the upper part buttons in POWER EGG screen. In case of using Back button, advance buttons or history display, etc. of the browser to perform the screen transition, those operations may not be performed normally.
3. Do not start and operate some POWER EGGs at the same time by starting many tabs in the same window. If performing that operation, the data may be collapsed.
4. About searching by character string:  
If you want to search for information by a character string in the POWER EGG, there are mainly the following three types of search methods.  
Search method depends on function or search item.
  - (1) Keyword Search  
Perform a search by entering the word as a keyword. In the case of a string that does not make sense as a word, you sometimes may not be able to search because it is different from the partial match search.  
In addition, it may take a few minutes until you may be able to search the data immediately after the registration or updated. If you are not be able to retrieve the data please retry to search after a while.  
Besides, when you specify more than one word, AND search is available if you enter one-byte space or "AND", and OR Search is available if you enter "OR".
  - (2) Partial match Search  
Perform a partial match search by the entered string.
  - (3) Special Search  
You are able to search by input string ignoring the case sensitivity or the distinction between double-byte and one-byte character or hiragana and katakana.
5. About the attached file search:  
If you are able to do both the keyword search and the attached file search at the same time, both the attached file name and information within the attached file can be searched.  
It may take a few minutes until you are able to search for the data immediately after the registration or updated. If you are not be able to retrieve the data please retry to search after a while.  
In addition, you can only search within the file with limited file format.  
However, the searching of attached files may not be possible if there is no permission from the system administrator.
6. About the displaying of message “...in half-size X characters”:  
Half-size character is a half-size alphanumeric character. In the case of characters other than half-size alphanumeric characters, 1 character equals to 3-4 half-size characters.




7. POWER EGG generally uses "Meiryo" as the display font.  
As the italic style of "Meiryo" font does not correspond to full-sized characters, it cannot be applied to full-sized characters even if it is set in italics by format setting.

## 2.1 POWER EGG Startup

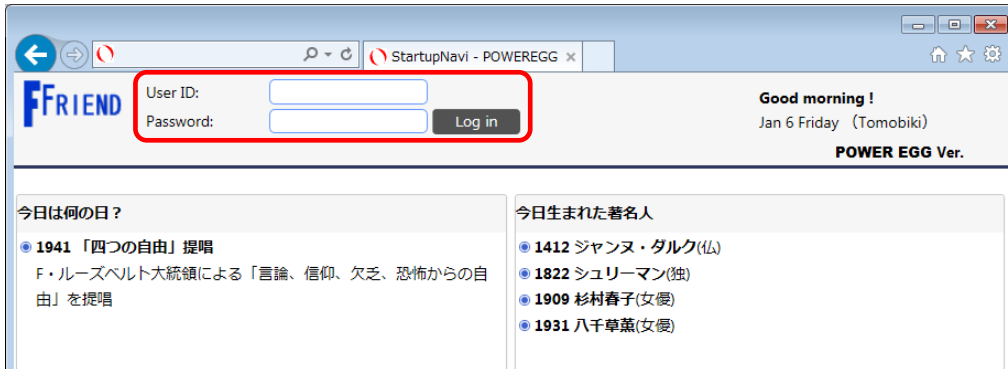
### Log in to POWER EGG

Step.1: Start the browser.

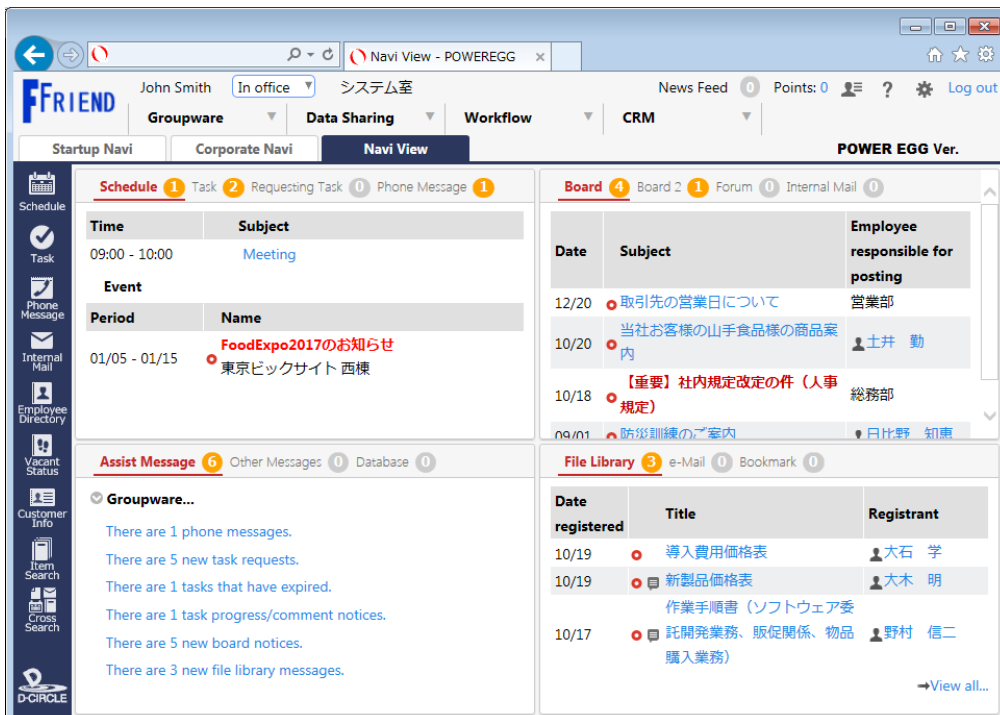
 About the correspondence browser, refer to “1. Client Initial Setup”.

Step.2: Enter the POWER EGG URL into **Address** field of the browser. About the URL, ask the system administrator.

Step.3: The POWER EGG login screen is displayed. Enter the user ID and login password.



Step.4: Click **Log in** button. After the login, if the Corporate Navi screen is displayed, then click **Navi View** button. NaviView screen will be displayed.







Knowledge Management Portal  
**POWER EGG**



〒101-0051

東京都千代田区神田神保町 2-36-1 住友不動産千代田ファーストウイング

TEL:03-3514-6060 FAX : 03-3514-6069

URL : <http://www.d-circle.com>